

SCALE 1" = 300'

RELATIVE REPRESENTATION

SEC. 3

SEC. 4

SEC. 5

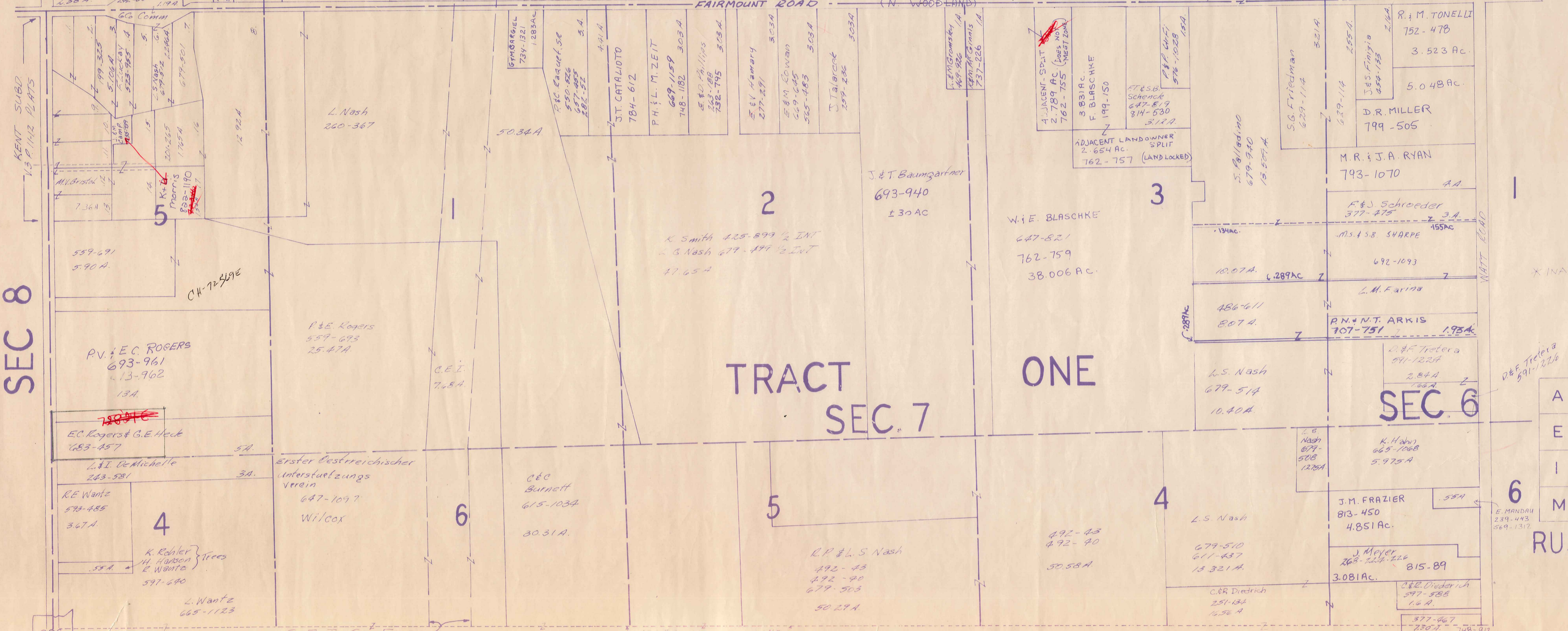
SEC. 8

TRACT ONE SEC. 7

ONE

SEC. 6

RUSSELL-C

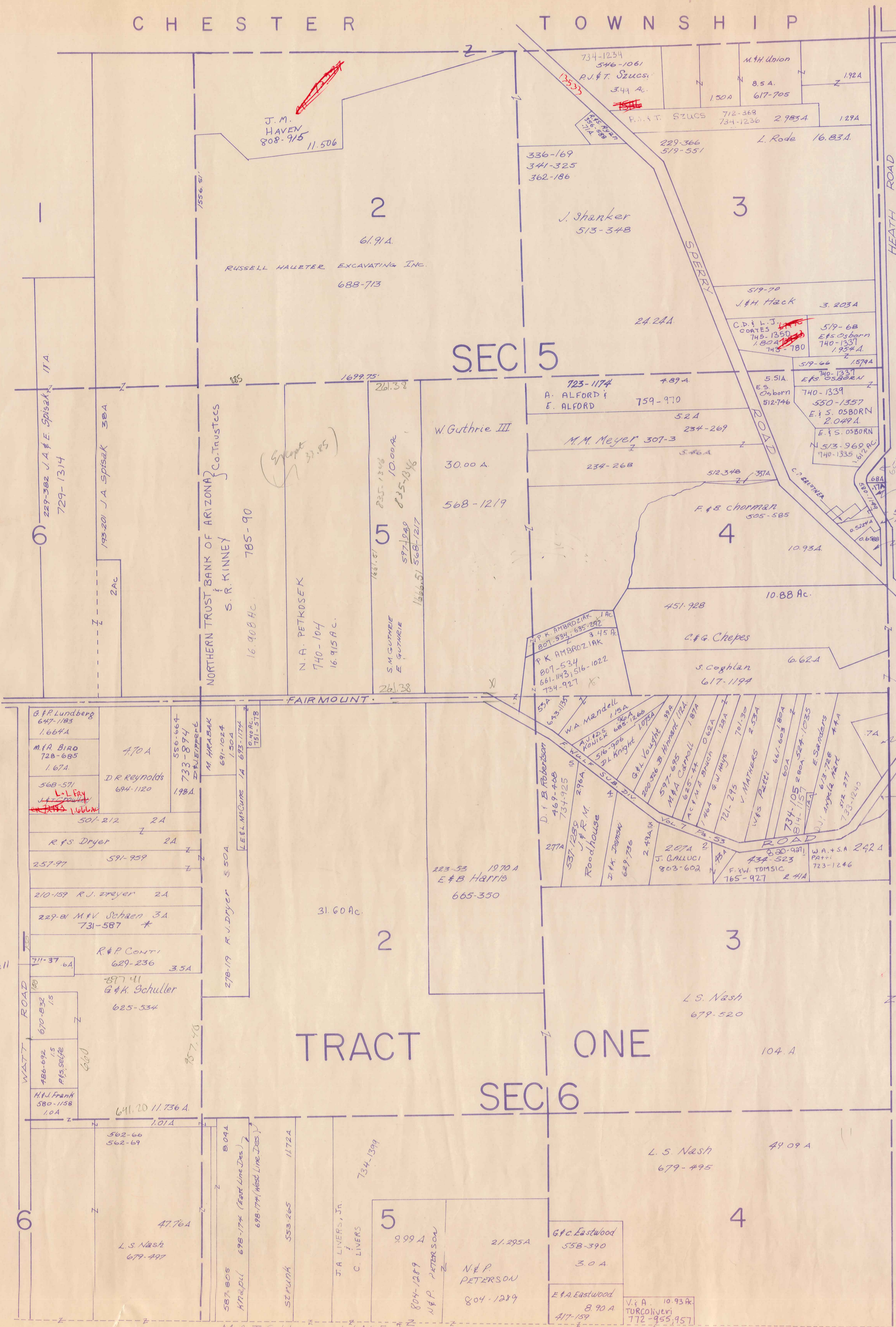


JANUARY 1, 1989

A	B	C	D
E	F	G	H
I	J	K	L
M	N	O	P

RUSSELL-C

CHESTER TOWNSHIP



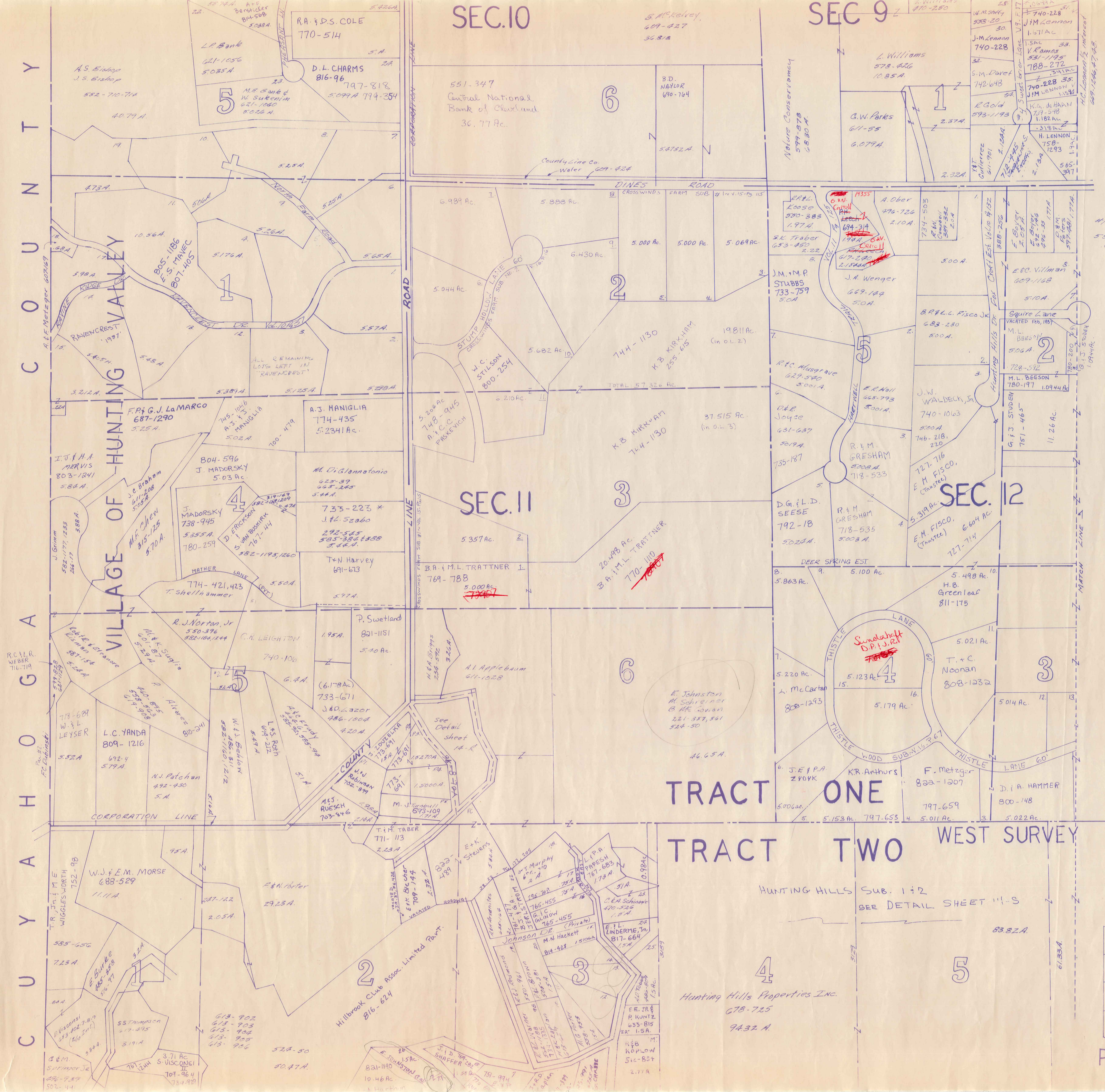
SCALE 1" = 300'
JAN. 1, 198

* Inadequate description

JANUARY 1, 1989
RELATIVE REPRESENTATION

A	B	C	
E	F	G	H
I	J	K	L
M	N	O	P

RUSSELL-D



SCALE 1" = 300

* Inadequate description

JAN 1, 1989
RELATIVE REPRESENTATION

A	B	C	D
E	F	G	H
I	J	K	L
M	N	O	P

RUSSELL-E

See plat 11-17

SEC. 9
733-464
G.E. & L. BAKER
688-887
553-143
766-856
10 Ac.
E.L. REESER

706-573
R.A. McDONALD
J. J. & L. HEDGES
520-712
417-486
733-554
R.A.J. SMITH
430-583
788-711
R. W. WELLES
J. & J. GOOD
576-17

SEC. 8
RUSSELL LAND CONSERVANCY, INC.
780-1172
18.52 Ac.
780-1172
780-1172
12.04 Ac.
10.02 Ac.
J.A. MASSEVIA
700-725
734-836
D.A. NELSON
27 Ac.
633-182
729-864

SEC. 2
M. Mobiliz
710-1146
3.59 Ac.
G.S. LOEY
786-1189
K. & D. BRANDT
669-765
G.E. & J.R. STUDEN
685-804
751-465
G. & J. STUDEN
733-460

718-1177
S. & B. GINDLEY
815-641
A.S. LASKI
759-712
W.J. B.E. MILTNER
760-1000
E. & B. DERRA
801-836

50.06 Ac.
5.57 Ac.
Z.M. POZO
816-060
F.M.J. COFFARI, JR.
758-923
A.M. MARTINO
613-1260
ALICE M. HANDS
599-1094
N.J.C.A. GRASSI
787-90
J.L. BULGAR
800-29
J.G. & L.C. BULGAR
795-1021

SEC. 1
E. HAYMAN
574-424
571-102
734-1340
J.E. MAIER
702-1341
F.M. FAGAN, JR.
538-81

734-1340
J.E. MAIER
702-1341
F.M. FAGAN, JR.
538-81
J. & E. FRANK
815-1233
J. & F. GRONDEN
484-346

SEC. 13
A.M. MARTINO
613-1260
ALICE M. HANDS
599-1094
N.J.C.A. GRASSI
787-90
J.L. BULGAR
800-29
J.G. & L.C. BULGAR
795-1021
A.A. MALENZ
705-322
G.P. & M.G. AHEARN
813-456
R.M. LONERGAN
712-1328
P. & D. GAMBRESSE
749-1189

5.032 Ac.
A.H. & H. SEMERS
A.H. METZGER
823-955
J.P. & L.A. MISCHER
816-479
5.038 Ac.
5.025 Ac.

798-320
W.L. Waeljen
798-320
M.M. AHMAD
677-1191
775-99
B.R. & S.A. BIRD
770-1397
775-99
B.R. & S.A. BIRD

TRACT ONE
738-820
F.A. & P. VITALE
735-712
775-99
B.R. & S.A. BIRD
770-1397
775-99
B.R. & S.A. BIRD
770-1397

TRACT TWO
747-157
A.C. DYER, JR.
747-157
M.F. & L.R. NOVELLI
751-1283
S. & C. DAVIS
730-206
E.F. HOCEVAR
792-1249, 621-1196
S.L. KNIGHT
818-401
S.K. SIMMONS
818-401
J.M. & D. STROUD
756-1215
J.J. WARD
713-1253

TRACT TWO
747-157
A.C. DYER, JR.
747-157
M.F. & L.R. NOVELLI
751-1283
S. & C. DAVIS
730-206
E.F. HOCEVAR
792-1249, 621-1196
S.L. KNIGHT
818-401
S.K. SIMMONS
818-401
J.M. & D. STROUD
756-1215
J.J. WARD
713-1253

TRACT TWO
747-157
A.C. DYER, JR.
747-157
M.F. & L.R. NOVELLI
751-1283
S. & C. DAVIS
730-206
E.F. HOCEVAR
792-1249, 621-1196
S.L. KNIGHT
818-401
S.K. SIMMONS
818-401
J.M. & D. STROUD
756-1215
J.J. WARD
713-1253

SCALE 1"=300'

* Inadequate description

January 1, 1909
RELATIVE REPRESENTATION

A	B	C	D
E	F	G	H
I	J	K	L
M	N	O	P

RUSSELL - F

724-871 RUSSELL TR.
512-589 RUSSELL TR.

SEC. 8

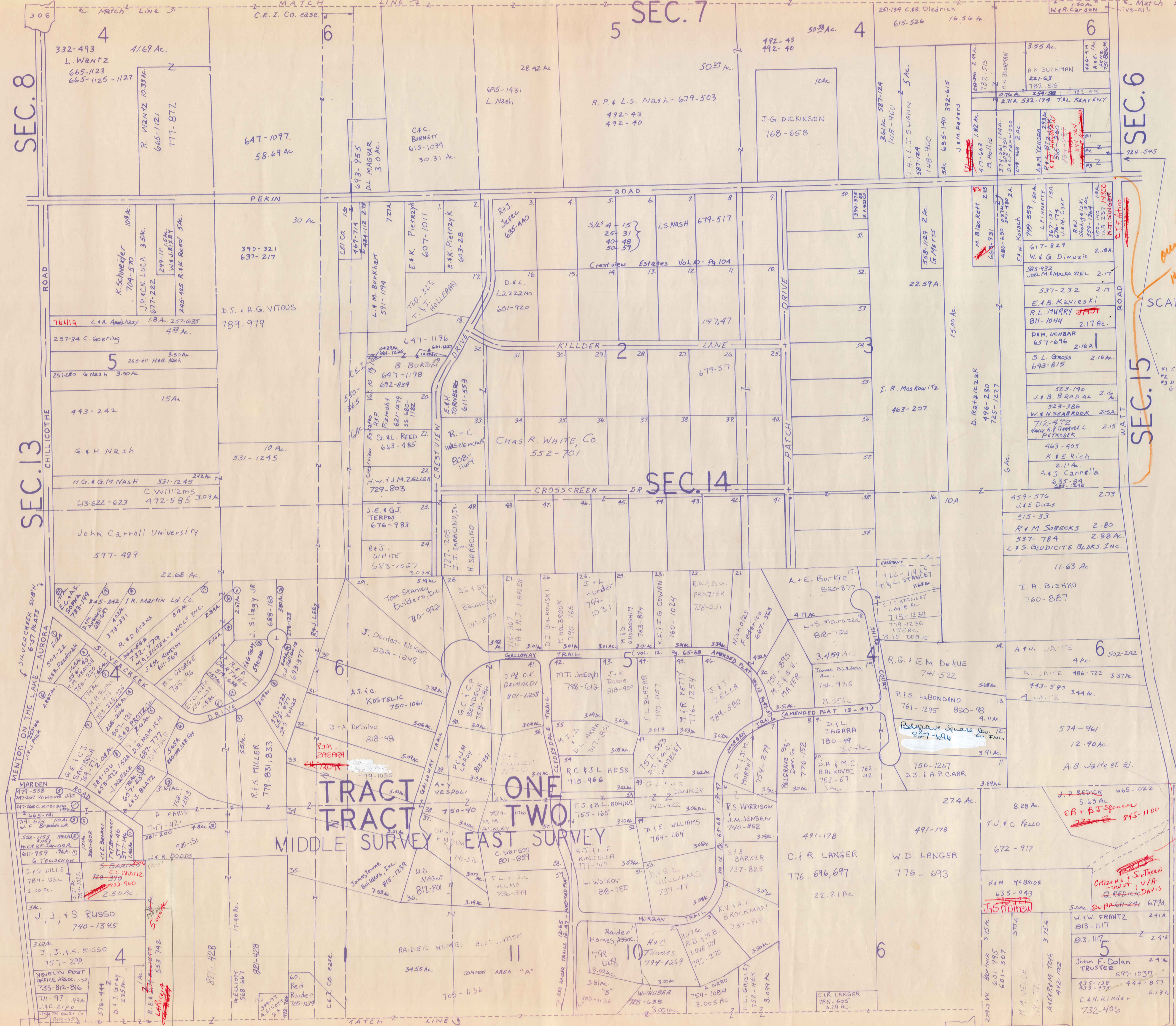
SEC. 7

SEC. 6

SEC. 13

SEC. 14

SEC. 15



SCALE 1" = 300'

* Inadequate description

A	B	C	D
E	F	G	H
I	J	K	L
M	N	O	P

RUSSELL-G

RELATIVE REPRESENTATION

JANUARY 1, 1989

ow flax 14-19

ow flax
H-80

J.P. REDICK 665-1022
5.63 Ac
EB + BJ Spence
233-112 845-1100

Citizens & Southern
Trust Co. v. J.A.
G. REDICK, DAVIS

J. J. MURPHY

KIM M-BRIDE
635-943

John F. Dolan
TRUSTEE 2.91 Ac

C.N. Kinder
732-406

ow flax 14-19

233

C O O U N C I L M E M B E R S

N O R T H W E S T

C O O U N C I L

M E M B E R S

N O R T H W E S T

C O O U N C I L

M E M B E R S

N O R T H W E S T

C O O U N C I L

M E M B E R S

N O R T H W E S T

C O O U N C I L

M E M B E R S

N O R T H W E S T

C O O U N C I L

M E M B E R S

N O R T H W E S T

C O O U N C I L

M E M B E R S

N O R T H W E S T

C O O U N C I L

M E M B E R S

N O R T H W E S T

C O O U N C I L

M E M B E R S

N O R T H W E S T

C O O U N C I L

M E M B E R S

N O R T H W E S T

C O O U N C I L

WEST TRACT SURVEY TWO THREE

SCALE 1" = 300'

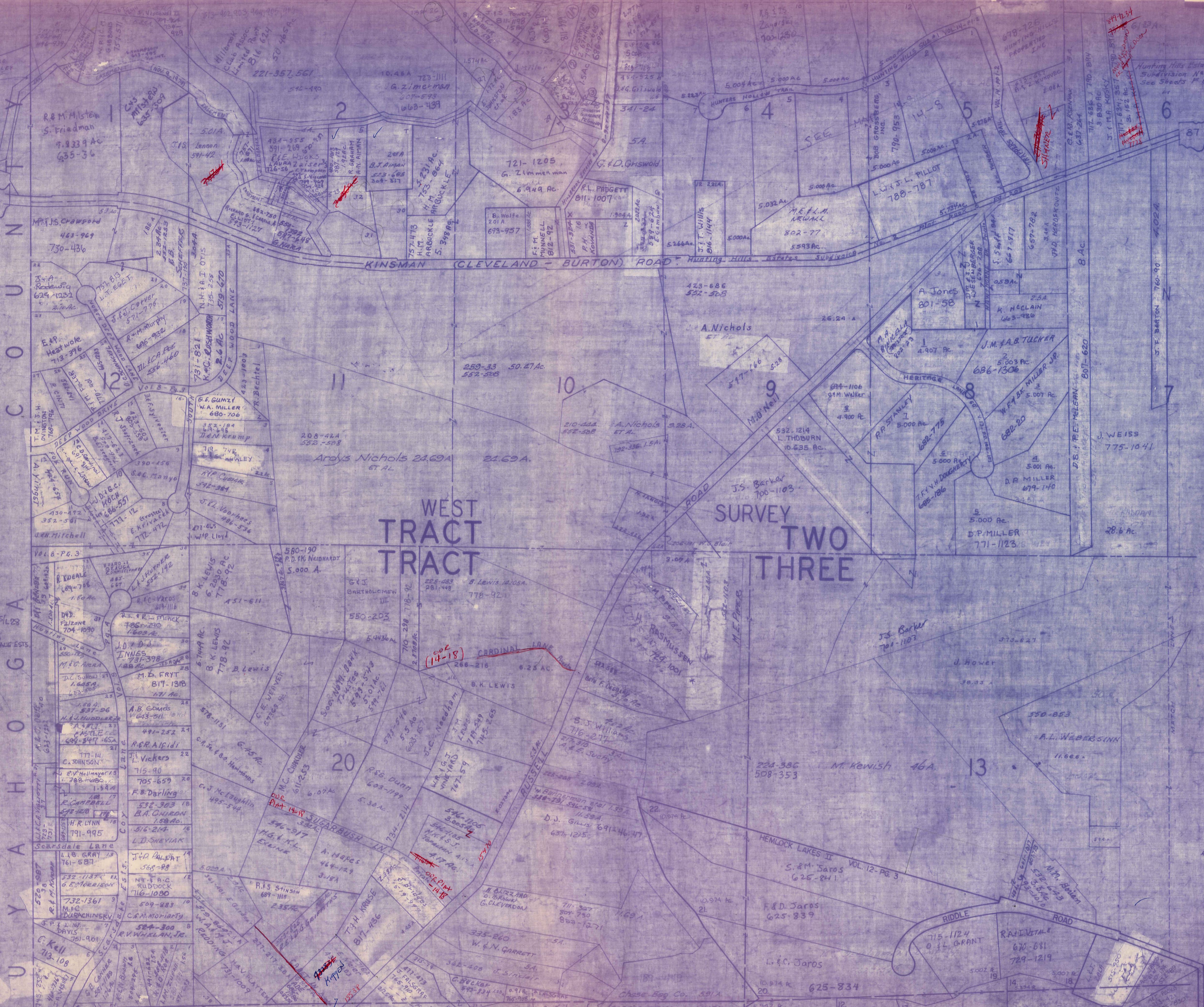
* Inadequate description

JANUARY 1, 1989
RELATIVE REPRESENTATION

A	B	C	D
E	F	G	H
I	J	K	L
M	N	O	P

RUSSELL

VILLAGE OF CHAGRIN FALLS





SCALE 1" = 300'

WEST SURVEY

HUNTING HILLS ESTATES SUBDIVISION NO. 1 - PART VOL. 6, PG. 201

H* R. MODROO 95.76 AC.

SEE PAGES 11 & 12 FOR HEMLOCK LAKES NUMBER TWO, & CORNER PROPERTY OWNERS.

* Inadequate description

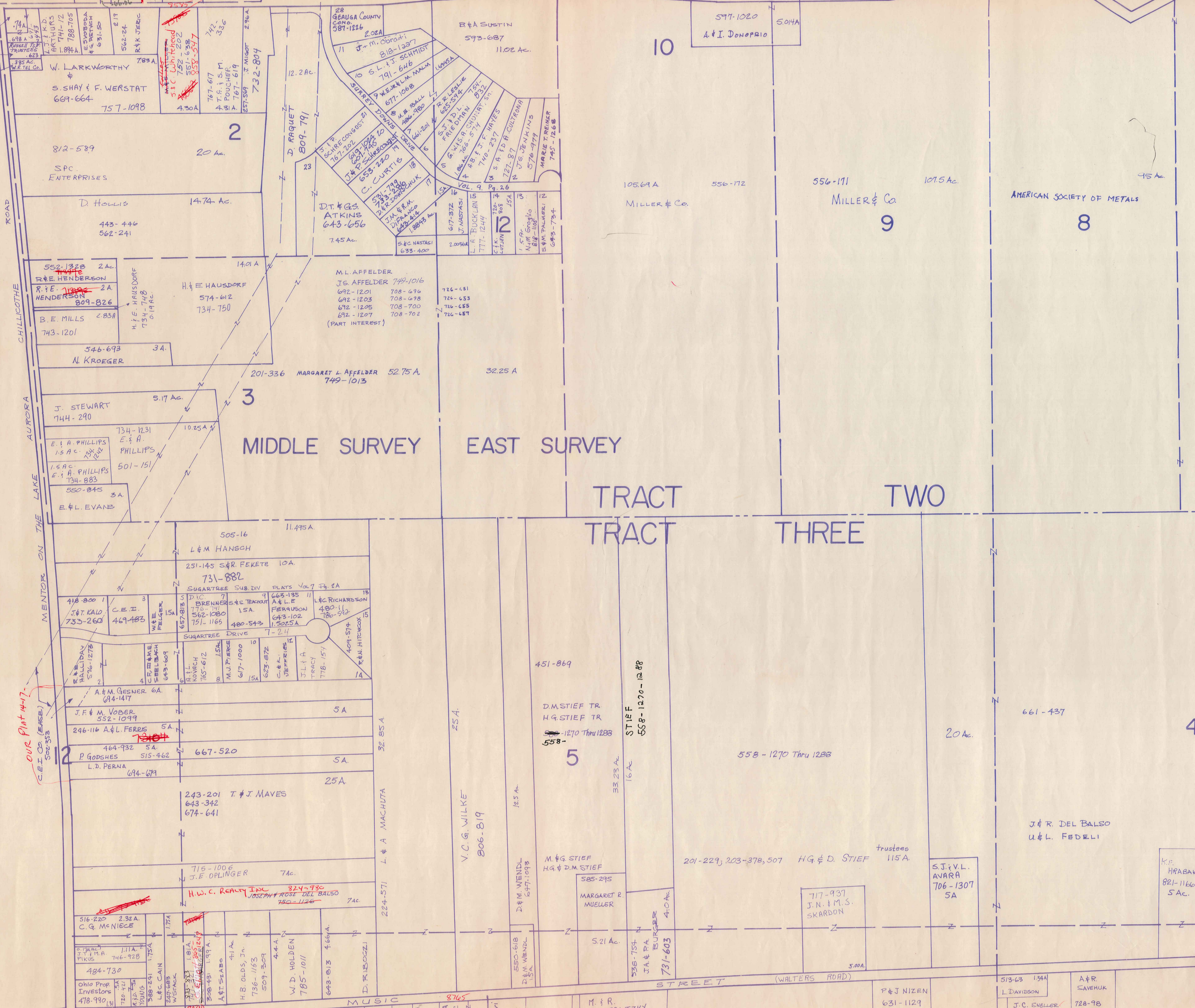
JANUARY 1, 1989
RELATIVE REPRESENTATION

A	B	C	D
E	F	G	H
I	J	K	L
M	N	O	P

RUSSELL - J

See map page 14-14

RICHARD A. NOVAK 617-801-336-203-204 665-1150 The Standard Oil Co.
KINSMAN
WALERS ROAD, JR. 728-658 3,001 AC.
A. NERO 754-1004 3,005 AC.
C. R. LANGER 776-696 22.21 AC.
E. R. LANGER 785-605 3.29 AC.
W. LANGER 491-178 776.93



SCALE 1" = 300'

* Inadequate description

JANUARY 1, 1989
RELATIVE REPRESENTATION

A	B	C	D
E	F	G	H
I	J	K	L
M	N	O	P

RUSSELL-K

OUR Plot 4-17
C.E.I. Co. (LEASE)
500-353

K. REDFERH
& KREUZ
603-556

603-556
R. BRAUN
647-1156

484-730
Ohio Prop. Investors
478-990

498-667
N. J. P. CURR
738-1170

729-774
W.D. HOLDEN
785-1011

738-1170
A. BERLINGERI
811-1295

60 AC.
758-281
G. L. McINTYRE
MILLER & CO.

807-867
10.00 AC.
MILLER & CO.

542-194
MILLER & CO.

150-254 AC.
3.85 AC.
MILLER & CO.

513-63
L. DAVIDSON
J.C. SWELLER
587-896
3.27 AC.
812-223

A. R. SAHAK
728-98

513-63
L. DAVIDSON

513-63
L. DAVIDSON

513-63
L. DAVIDSON

513-63
L. DAVIDSON

513-63
L. DAVIDSON

513-63
L. DAVIDSON

513-63
L. DAVIDSON

513-63
L. DAVIDSON

513-63
L. DAVIDSON

513-63
L. DAVIDSON



N E W B U R Y T O W N S H I P

* inadequate description

RELATIVE REPRESENTATION
JANUARY 1, 1989

A	B	C	D
E	F	G	H
I	J	K	L
M	N	O	P

RUSSELL-L

CHAGRIN HEIGHTS SUBDIVISION VOL. 3 - PG. 5-6 & 17-18 PLATS

1	GERUGA COUNTY B.O.C. (part of)	621-728
2	F. WILEY	599-35
3	D. Manfredi	454-896
4	"	"
5	"	"
6	E. Unkrich	615-239
7	"	"
8	E. Unkrich	800-830, 574-82
9	"	"
10	S. OLLAND	616-238
11	O. DIAMOND	574-575
12	"	"
13	"	"
14	C. J. & M. ALSTROM	802-1227
15	"	"
16	M. Richards	537-536
17	"	"
18	R. & K. LOMBARDI	735-576, 611-780
19	"	"
20	N. SIMPSON	508-593
21	"	"
22	R. DENIN (and part of 23)	542-535
23	K. C. Smith 1/2 23 + 1/2 24	703-1195
24	"	"
25	W. & M. DAVIS & L. JOHNSON	783-1043, 704-691
26	"	"
27	V. J. MILLER	237-583
28	W. & H. Pecaris	733-862, 738-414
29	"	"
30	R. L. BRAATZ	673-726
31	"	"
32	R. G. & R. W. HOSMER	732-201
33	"	"
34	Tn. Cong. - Decade Ch. of Ch. Falls	469-790
35	"	"
36	"	"
37	J. TRUDICK + N 1/2 of S 1/4 36	629-530
38	A. H. GROZD	733-50, 484-43
39	G. C. HILL + 1/2 40	710-290
40	J. M. SAVAGE	665-883
41	"	"
42	K. R. & S. L. MARGOLIS	"
43	"	"
44	S. L. W. BERG	809-428
45	"	"

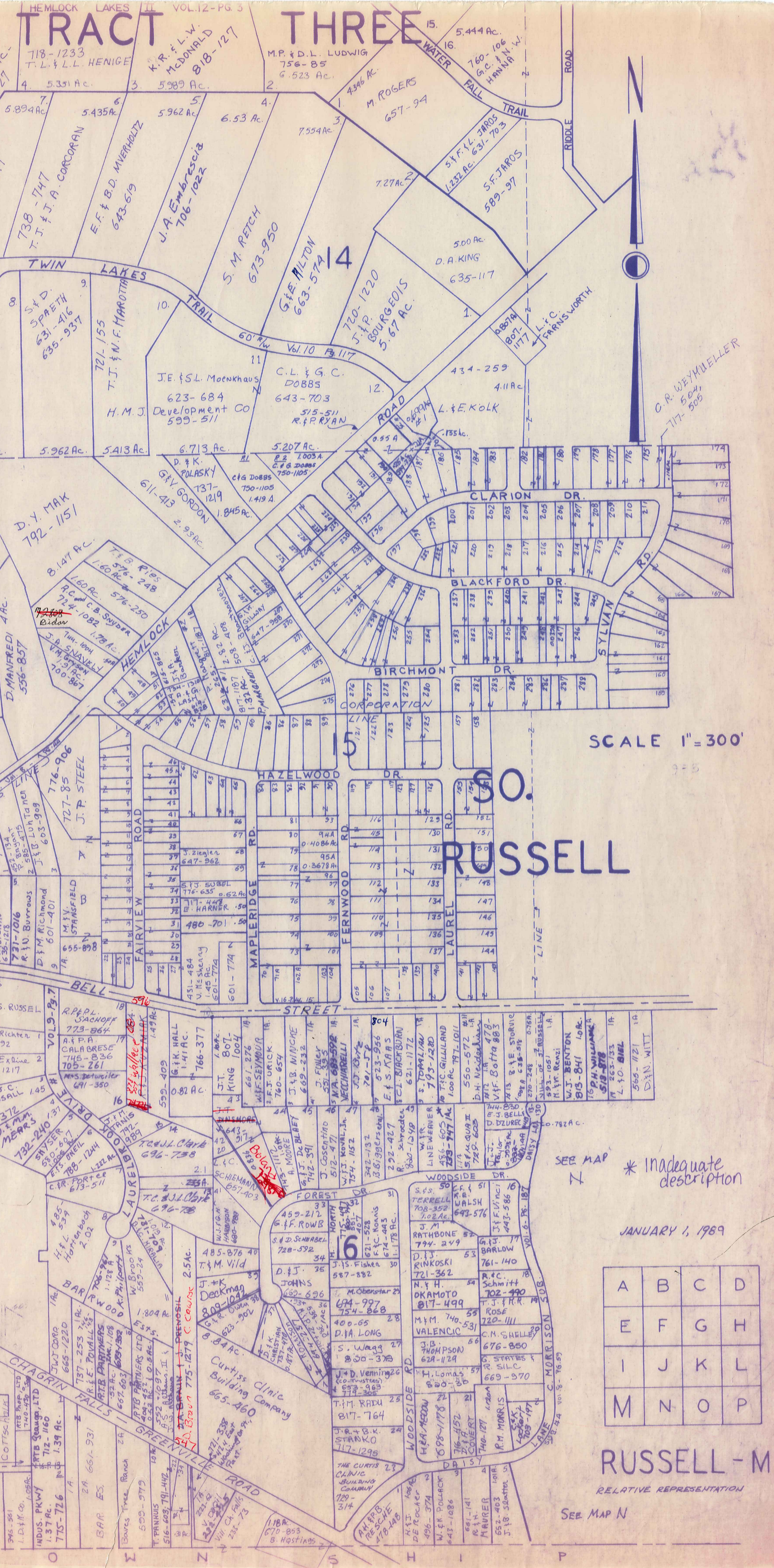
46	S. L. W. BERG	809-428
47	J. & M. Corlett	733-1043, 705-589
48	"	"
49	L. LOPATT	727-571
50	"	727-571
51	G. & A. LASH	734-1308
52	"	"
53	"	"
54	"	734-1304
55	P. H. LOY	609-837
56	S. O. ALTHANS	746-897
57	S. W. WENDL	732-839
58	M. TALLION	553-286
59	K. SCOVON	574-1259
60	R. & K. VENEK	601-625
61	A. & G. J. LASH	734-1306, 609-331
62	"	"
63	G. H. & M. MILLER	685-969
64	"	"
65	W. & B. CLOSE + 1/2 64	260-11, 403-23
66	BECKET BUILDERS, INC.	808-290
67	H. D. MERCER	270-362
68	R. & J. ZIEGLER	551-568
69	J. L. KEEFER	683-545
70	T. SASAKI	691-322
71	O. DIAMOND (V. 16, P. 14)	776-867
72	B. (See 102A)	"
73	L. R. McCREIGHT	738-871
74	W. R. & G. K. EDWARDS	751-921, 923
75	C. W. HUDSON	781-952
76	J. D. & P. F. RICHLAK	676-353
77	J. K. BEARD + 1/2 78	814-1141
78	R. & V. KUJAT 1/2 78	733-866, 246-502
79	R. & V. KUJAT	246-502
80	R. & L. SPASSER	726-1054
81	F. G. & M. J. MILLER	789-259
82	M. J. YOORHEES	88-445, 623-46
83	C. K. FERRETTE	637-843
84	K. E. & J. D. SHUTTS	734-258, 553-14
85	B. A. & M. A. PALMER	724-442
86	M. E. MATTERN	767-172, 672-774
87	J. & K. CONLEY	246-417
88	D. T. CONLEY	629-538
89	M. T. BROWN	495-470
90	F. & E. VAN LENTE	687-64

91	F. & E. VAN LENTE	687-64
92	E. & B. L. BENS	717-1287
93	R. & P. VAN BEEKUM	492-575
94	A. & J. GRIERSON	734-545
95	A. J. & T. S. ROCKWELL (part of 96)	774-323
96	"	"
97	R. J., JR. & L. S. FRAZIER + 1/2 96	721-562
98	W. & D. GRUBLE	665-1309
99	R. C. SCHLOSS	643-671
100	D. Gogel-Nadler	801-424
101	"	"
102	A. (102 + 728 part of 103) L. C. WALTERH	814-304
103	R. & E. WISNIEWSKI	491-629
104	"	"
105	C. & J. HUNT + 1/2 106	245-542
106	"	"
107	J. F. O'DONNELL + 1/2 106	739-1203
108	T. & A. BACHELOR part of 105, 106, 107	741-623
109	B. K. UTTS	737-30
110	G. M. EATON + 0.95 AC.	729-264
111	E. BISSETT & J. LANGSTAFF	805-1243
112	A. & Y. ADAMS	731-956, 731-958
113	M. JONES	495-882
114	L. & V. McHENRY + 1/2 115	679-540
115	M. M. WATCH	689-1049
116	"	"
117	D. J. BROWN	669-924
118	A. TRGSCHERER	725-488, 717-709
119	E. V. CORLETT	676-1133, 687-39, 38
120	"	"
121	K. & J. SHUTTS	734-266, 619-70
122	"	"
123	J. H. SPANO	695-872
124	C. E. HUNT N 1/2 of 124 + 125	320-313, 470-981
125	H. M. JONES PAS. 1/2 124 + 125	424-97, 170-751
126	G. FRAPPIER	766-544
127	"	"
128	C. N. OENRIDER	587-719
129	D. GRIFFITH	571-1053
130	R. & M. De SANTIS	430-640
131	F. J. & R. J. SWAYE	718-864
132	J. D. G. HOLLINGSWORTH	731-536, 693-942
133	J. & F. BLANCK	694-1418
134	T. WOJCZYK & D. MAY	805-1274
135	T. S. McCARHY	502-1035

136	M. & M. VARGO	254-409
137	S. SCHMIDT & P. SCHMIDT	373-455, 603-822
138	D. BARSON + 1/2 139	718-1234
139	SINDELAK (containing 1/2 of 139)	"
140	J. & G. BYRNE + 1/2 139	718-909
141	R. K. TROPP + 1/2 of 142	501-385
142	N. JOHNSON 3/8	802-549, 565-599, 637-1094
143	"	"
144	J. & J. Almasi (part of 141 + 142)	788-183
145	G. E. Kostula	479-856, 898
146	M. C. JANTZ	776-986
147	B. TOOHIG	553-1097
148	J. KENNETH HOWELL	687-422
149	"	"
150	P. MARZ	362-333
151	M. YOUNG	665-147
152	W. R. KAMPE & M. LIEDERBACH	792-738
153	H. C. Rankin	785-653
154	K. R. S. H. FELKER	556-5
155	"	"
156	"	"
157	W. NUGENT & R. MARONEY	685-887
158	D. D. BARRIGALL	285-172
159	T. B. KORTZ & T. J. KORTZ	803-142, 247-045
160	C. D. BERNIS + 1/2 161	607-1097
161	S. KRIDER	378-273
162	W. H. WELLS + 1/2 161	791-312
163	W. E. & K. MILLER	794-900
164	"	"
165	part of 164 + J. G. Sr. & B. J. KOTAPISH	789-1122
166	A. J. STANTON	745-227
167	"	"
168	D. C. McCahon	820-199
169	D. C. McCahon	784-684
170	"	"
171	M. L. & K. L. FORD, JR.	768-1177
172	"	"
173	G. D. & D. A. KELLY, JR.	759-244
174	"	"
175	C. R. WEYMUELLER	717-504
176	"	"
177	C. HART	320-281
178	"	"
179	C. CROSKY	180-582
180	W. & N. KOONS + 3/8 181	603-60
181	"	"
182	K. & L. LADLEY 3/8 181 + 1/2 ELM RD	811-150
183	R. & S. NOVAK	702-97
184	"	"
185	R. D. NABIE + 65' of 184	591-1007
186	L. BARRIBALL	786-581, 757-312
187	"	"
188	"	"
189	G. R. & B. POTTS	745-1296
190	"	"
191	"	"
192	"	"
193	C. A. MORRIS	811-1182
194	G. R. & B. POTTS	745-1296

195	G. R. & B. POTTS	745-1296
196	G. R. & B. POTTS	745-1296
197	Patricia Jo Davidson	713-1023
198	T. L. Fox	765-378
199	E. P. Belanger + 3/8 199	469-545
200	"	"
201	F. G. & J. M. WEBB + 1/2 200	683-525
202	R. E. Lechner	823-809
203	"	"
204	P. & M. EARLY + 1/2 203 + 1/2 205	470-603
205	J. M. KROON 3/4 205 + 1/2 206	559-1106
206	"	"
207	C. R. & R. CALDWELL + 1/2 206 + 1/2 208	746-809
208	"	"
209	L. M. HADDOCK + 1/2 208 + part of 210	721-34
210	K. R. Schmelchel	629-100
211	"	"
212	P. B. McCLAIN	815-1277
213	E. F. McCoy + 1/2 214	591-82
214	Richard & Mary Jane Skelley 3/8 214	587-199
215	"	"
216	M. F. MANN	716-1020
217	"	"
218	J. F. LEFFY	770-255, 703-652
219	"	"
220	M. L. PRICE	637-358
221	L. F. HECKELMAN 1/2 222	607-364
222	R. MURPHY & S. Tammarino (w 1/2 of 222)	574-710
223	W. Stanton et al.	478-200
224	R. & C. THOMAS + 1/2 225 + 3/8 229	304-20
225	"	730-427
226	J. H. MARSHALL + 1/2 225	727-825
227	D. V. SUTLIFF	593-716
228	"	"
229	J. H. MARSHALL 3/8 only	727-825
230	D. & B. DOMBICKI + 2 1/2 small R. 1/2 231	776-215
231	"	"
232	I. & M. KONIG + 1/2 231 + 1/2 233	512-941
233	"	"
234	R. P. GILBERT + 1/3 235	611-679
235	"	"
236	J. M. RUNGE + 3/8 235	617-357
237	M. Voorhees + 1/2 238	800-752, 288-492
238	R. L. SIMPSON	794-65
239	"	"
240	"	"
241	J. & J. Broyles + 1/2 242 + 60' of 240	812-874
242	A. & E. WALKER	720-313
243	B. J. CARPENTER + 1/2 of 242	"
244	R. A. BEST	479-649
245	"	"
246	M. J. WHITMAN	565-84
247	J. & L. J. SHELTON	742-994
248	"	"
249	J. O. ALBERT + 1/2 250	802-25
250	K. S. HARROLD & J. REINHART	682-278
251	"	"
252	M. J. TURNER	270-536
253	M. D. BROWN + 1/2 252	589-1000
254	K. W. Raupach Jr.	809-1052
255	R. P. CONRAD	743-1094

1. A. G. ZACHEM 755-384 - TAX DUPLICATE - 70 AC - DEED - 699 AC
 2. L. BARRIBALL 757-312 - 1.337 AC - N 786-581
 3. K. M. CROTTY 756-1192 - (FRONTAGE - 37.25) DEED - .45 + AG. TAX DUPLICATE - .25 AC - 1.24 AC



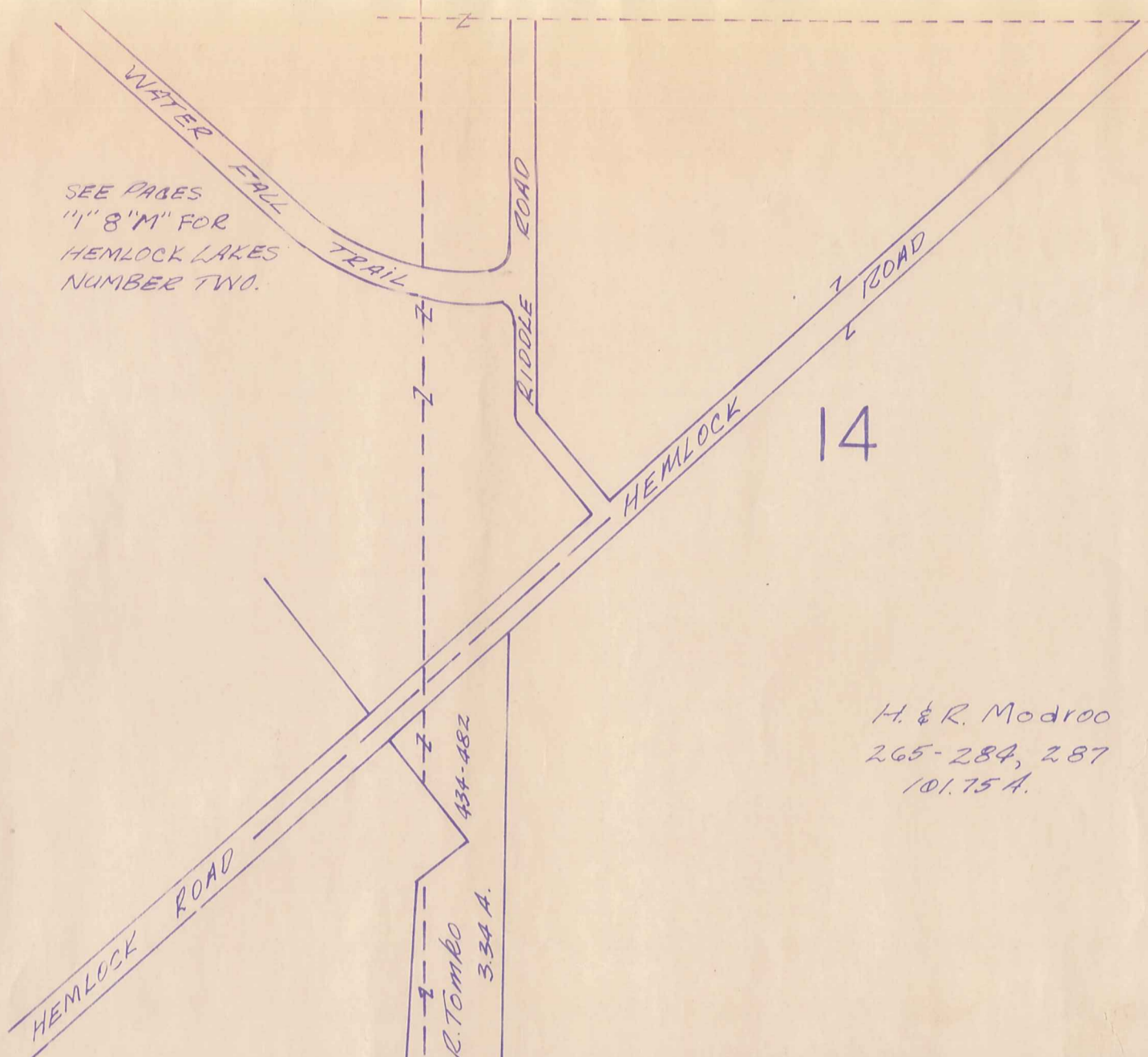
SCALE 1" = 300'

JANUARY 1, 1989

A	B	C	D
E	F	G	H
I	J	K	L
M	N	O	P

RUSSELL-M
 RELATIVE REPRESENTATION
 SEE MAP N

* Inadequate description



MANOR BROOK DRIVE
WHITETAIL RUN CONDO PHASE I-V. 16-P. 107
UNIT G6: (211) P.T.J. BRIGANTI, 814-944
UNIT G7: P+D. NARTEN 801-83
UNIT G9:
UNIT G10: (219) J.T.R. TEAGNO 800-204

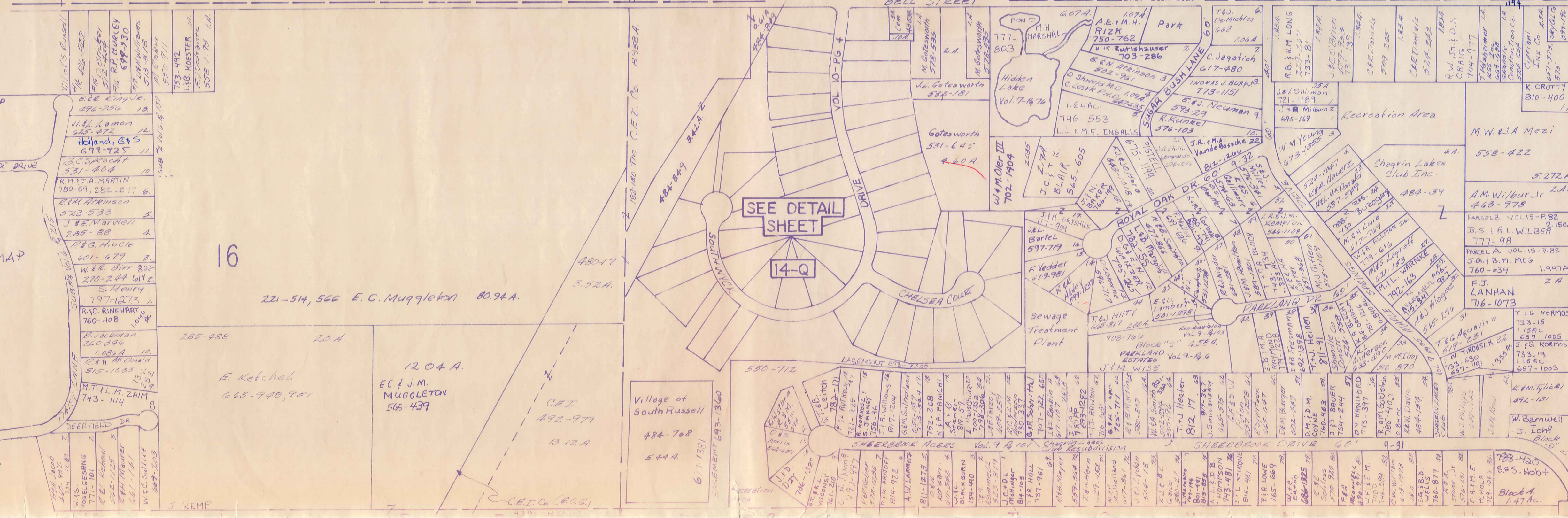
WHITETAIL RUN CONDO PHASE II ~ V. 16-P. 131
UNIT G1: (201)
UNIT G2: (203)
UNIT G3: (215) L.C. WISE 808-1
UNIT G4: (207) C. MACK 820-960
UNIT G5: (209) P.F.R. RISTAU 806-126
UNIT G6: (215) H.D. GOLDSTEIN 817-474
UNIT G11: (221) D. BROCKLEBANK 806-134

WHITETAIL RUN CONDO PHASE III ~ V. 17-P. 21
H13: (275) A.F.J. SAVAGE 815-671
H34: (277)
H15: (229) J.L. KWASNY 815-453
H17: (233) M.M. ROHRER 818-687
H18: (235) J.C. DESPREZ 823-204
H19: (237) H.E. PELLER 817-572

WHITETAIL RUN CONDO PHASE IV ~ V. 17-P. 71
H22: (223)
H16: (231) M. TOMASHEFSKI (800) 820-400
H20: (239)

TRACT THREE

SO. RUSSELL VILL.



SEE MAP M

SEE MAP M

SEE MAP M

SCALE 1"=300'
JAN. 1, 1989

Vol 13-Pg 92
Manor Brook Garden
Condominium I
Unit No.
A1-125-V.B. BENDER 671-750
A2-127-V.B. BENDER 671-750
A3-129 E.S.K. WICKESSER 794-110
A4-131 T.E. WEIZER 808-494

Manor Brook Garden
Condominium Phase II
Vol 13-P141 678-283

PHASE III VOL. 14-PG. 22
UNIT D
D-1-104 R.Y. KLIE 693-710
D-2-104 G.W.C. HERMAN 745-1
D-3-102 S.J. FETKO 792-574
D-4-100 G.O. SMITH, JR. 815-288

Vol 14-Pg 34
UNIT E
E-1-126 W.C.A. G.S. HUBBY 719-644
E-2-128 R.H. WICKESSER 690-499
E-3-122 J.H. BOCK 681-347
E-4-130 CAR. FED. SAV. 1-1051
E-5-118 M.W. THOMAS 683-224

* Inadequate description

A	B	C	D
E	F	G	H
I	J	K	L
M	N	O	P

RUSSELL-N

799-555
AL. 4716 REPRESENTATION

TRACT THREE

M. R. SACKERLOTZKY
807-867

6

MILLER + CO.
542-1947

38.29 AC.

Andrew & Ruth Sachuk
728-98

H + R. SANC HUK

150.25 AC.

FLORENCE A. HAYES SOB.
V. 12, P. 19

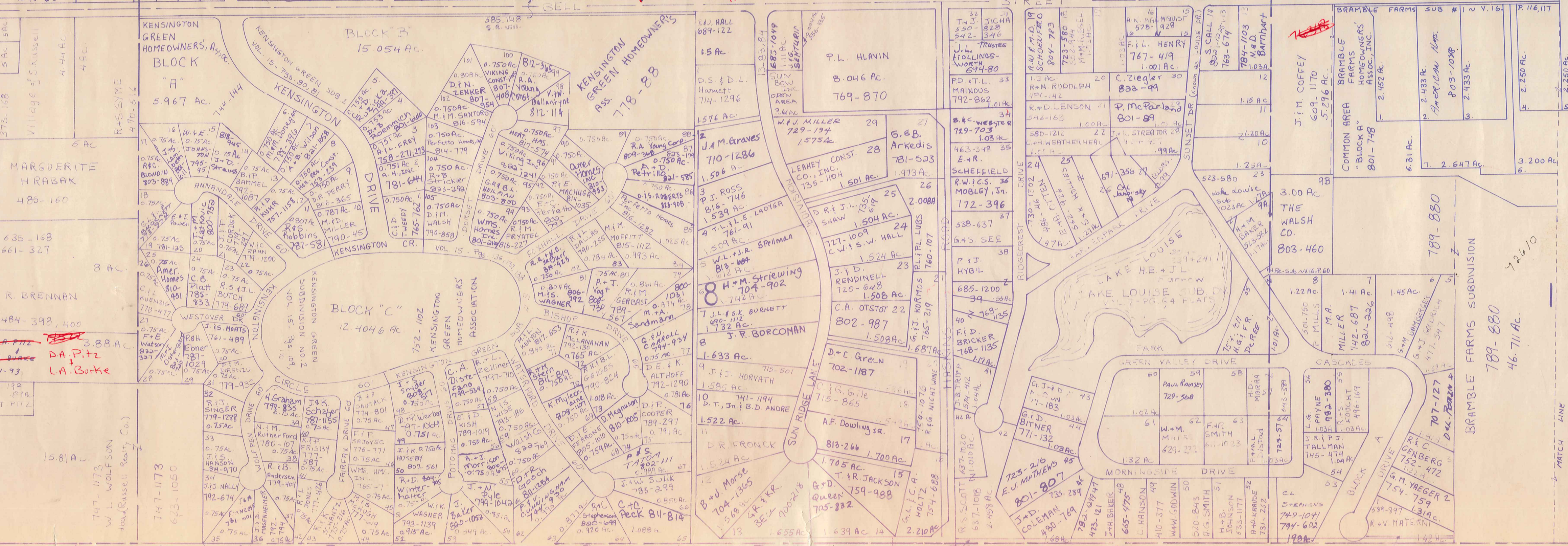
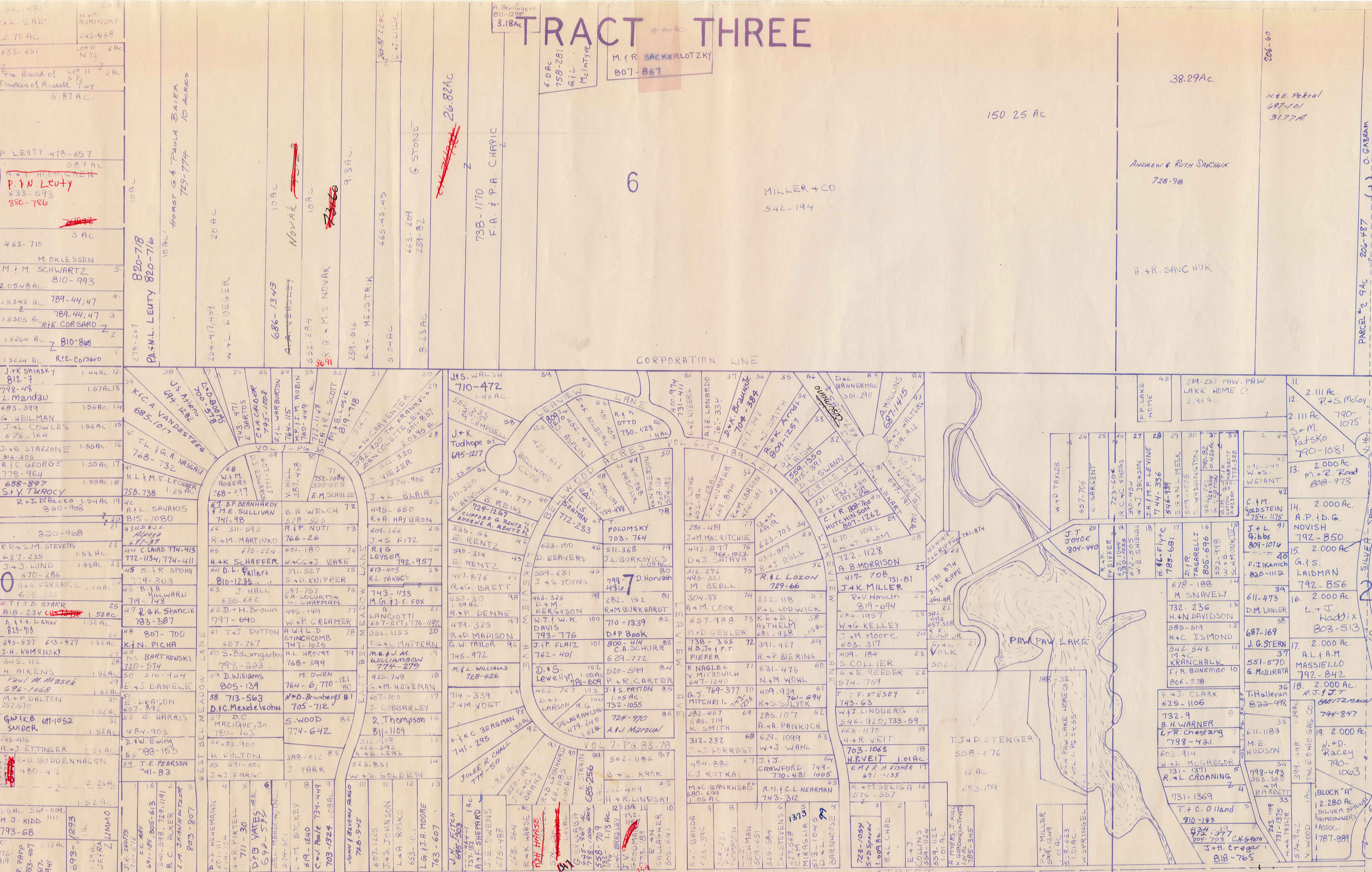
PLEASANT ACRES SUBD'N NR 2 VOL 6 PGS 21A 22

BELL PROP 749-277
192-23 VILL 26 RUSSEL

426

10.81 A

747-173
W. H. WOLFSON
100 Russell Realty Co.



M.E. + J.L. FARROW VOL 304 PGS 239+241
Lake Louise Subd'n Vol 7 Pg 64

Lot	Vol.	Pg.	Owner
1	351	42	W + J GOLDBACH
2	367	57	R + B MATTHEWS
3	423	314	D + J PYNCHON
4	316	441	R + A. OLEWILER
5	273	22	R + M MERRITT
6			
7	492	266	V + M. OSYK
8	316	447	R + A. OLEWILER
9	319	79	A + M. BROWN
10	678	427	S + R + A. SADLER 677-949
11	702	1271	S + A. Sadler
12	537	86A	J + G. MARIANO
13			

SCALE 1"=300'
JAN. 1, 1989

14	2,000 AC	M + Z Food 808-973
15	2,000 AC	NOVISH 792-850
16	2,000 AC	LIDMAN 792-856
17	2,000 AC	L + J Haddix 803-513
18	2,000 AC	A. L. A. M. MASSIELLO 792-842
19	2,000 AC	A. J. FORT 749-847
20	2,000 AC	N. D. Racy 790-1063
21	2,000 AC	BLOCK "A" 12,280 AC SILVER SPRING 1787-891
22	2,000 AC	W. H. WOLFSON 100 Russell Realty Co.
23	2,000 AC	W. H. WOLFSON 100 Russell Realty Co.
24	2,000 AC	W. H. WOLFSON 100 Russell Realty Co.
25	2,000 AC	W. H. WOLFSON 100 Russell Realty Co.
26	2,000 AC	W. H. WOLFSON 100 Russell Realty Co.
27	2,000 AC	W. H. WOLFSON 100 Russell Realty Co.
28	2,000 AC	W. H. WOLFSON 100 Russell Realty Co.
29	2,000 AC	W. H. WOLFSON 100 Russell Realty Co.
30	2,000 AC	W. H. WOLFSON 100 Russell Realty Co.
31	2,000 AC	W. H. WOLFSON 100 Russell Realty Co.
32	2,000 AC	W. H. WOLFSON 100 Russell Realty Co.
33	2,000 AC	W. H. WOLFSON 100 Russell Realty Co.
34	2,000 AC	W. H. WOLFSON 100 Russell Realty Co.
35	2,000 AC	W. H. WOLFSON 100 Russell Realty Co.
36	2,000 AC	W. H. WOLFSON 100 Russell Realty Co.
37	2,000 AC	W. H. WOLFSON 100 Russell Realty Co.
38	2,000 AC	W. H. WOLFSON 100 Russell Realty Co.
39	2,000 AC	W. H. WOLFSON 100 Russell Realty Co.
40	2,000 AC	W. H. WOLFSON 100 Russell Realty Co.
41	2,000 AC	W. H. WOLFSON 100 Russell Realty Co.
42	2,000 AC	W. H. WOLFSON 100 Russell Realty Co.
43	2,000 AC	W. H. WOLFSON 100 Russell Realty Co.
44	2,000 AC	W. H. WOLFSON 100 Russell Realty Co.
45	2,000 AC	W. H. WOLFSON 100 Russell Realty Co.
46	2,000 AC	W. H. WOLFSON 100 Russell Realty Co.
47	2,000 AC	W. H. WOLFSON 100 Russell Realty Co.
48	2,000 AC	W. H. WOLFSON 100 Russell Realty Co.
49	2,000 AC	W. H. WOLFSON 100 Russell Realty Co.
50	2,000 AC	W. H. WOLFSON 100 Russell Realty Co.
51	2,000 AC	W. H. WOLFSON 100 Russell Realty Co.
52	2,000 AC	W. H. WOLFSON 100 Russell Realty Co.
53	2,000 AC	W. H. WOLFSON 100 Russell Realty Co.
54	2,000 AC	W. H. WOLFSON 100 Russell Realty Co.
55	2,000 AC	W. H. WOLFSON 100 Russell Realty Co.
56	2,000 AC	W. H. WOLFSON 100 Russell Realty Co.
57	2,000 AC	W. H. WOLFSON 100 Russell Realty Co.
58	2,000 AC	W. H. WOLFSON 100 Russell Realty Co.
59	2,000 AC	W. H. WOLFSON 100 Russell Realty Co.
60	2,000 AC	W. H. WOLFSON 100 Russell Realty Co.
61	2,000 AC	W. H. WOLFSON 100 Russell Realty Co.
62	2,000 AC	W. H. WOLFSON 100 Russell Realty Co.
63	2,000 AC	W. H. WOLFSON 100 Russell Realty Co.
64	2,000 AC	W. H. WOLFSON 100 Russell Realty Co.
65	2,000 AC	W. H. WOLFSON 100 Russell Realty Co.
66	2,000 AC	W. H. WOLFSON 100 Russell Realty Co.
67	2,000 AC	W. H. WOLFSON 100 Russell Realty Co.
68	2,000 AC	W. H. WOLFSON 100 Russell Realty Co.
69	2,000 AC	W. H. WOLFSON 100 Russell Realty Co.
70	2,000 AC	W. H. WOLFSON 100 Russell Realty Co.
71	2,000 AC	W. H. WOLFSON 100 Russell Realty Co.
72	2,000 AC	W. H. WOLFSON 100 Russell Realty Co.
73	2,000 AC	W. H. WOLFSON 100 Russell Realty Co.
74	2,000 AC	W. H. WOLFSON 100 Russell Realty Co.
75	2,000 AC	W. H. WOLFSON 100 Russell Realty Co.
76	2,000 AC	W. H. WOLFSON 100 Russell Realty Co.
77	2,000 AC	W. H. WOLFSON 100 Russell Realty Co.
78	2,000 AC	W. H. WOLFSON 100 Russell Realty Co.
79	2,000 AC	W. H. WOLFSON 100 Russell Realty Co.
80	2,000 AC	W. H. WOLFSON 100 Russell Realty Co.
81	2,000 AC	W. H. WOLFSON 100 Russell Realty Co.
82	2,000 AC	W. H. WOLFSON 100 Russell Realty Co.
83	2,000 AC	W. H. WOLFSON 100 Russell Realty Co.
84	2,000 AC	W. H. WOLFSON 100 Russell Realty Co.
85	2,000 AC	W. H. WOLFSON 100 Russell Realty Co.
86	2,000 AC	W. H. WOLFSON 100 Russell Realty Co.
87	2,000 AC	W. H. WOLFSON 100 Russell Realty Co.
88	2,000 AC	W. H. WOLFSON 100 Russell Realty Co.
89	2,000 AC	W. H. WOLFSON 100 Russell Realty Co.
90	2,000 AC	W. H. WOLFSON 100 Russell Realty Co.
91	2,000 AC	W. H. WOLFSON 100 Russell Realty Co.
92	2,000 AC	W. H. WOLFSON 100 Russell Realty Co.
93	2,000 AC	W. H. WOLFSON 100 Russell Realty Co.
94	2,000 AC	W. H. WOLFSON 100 Russell Realty Co.
95	2,000 AC	W. H. WOLFSON 100 Russell Realty Co.
96	2,000 AC	W. H. WOLFSON 100 Russell Realty Co.
97	2,000 AC	W. H. WOLFSON 100 Russell Realty Co.
98	2,000 AC	W. H. WOLFSON 100 Russell Realty Co.
99	2,000 AC	W. H. WOLFSON 100 Russell Realty Co.
100	2,000 AC	W. H. WOLFSON 100 Russell Realty Co.

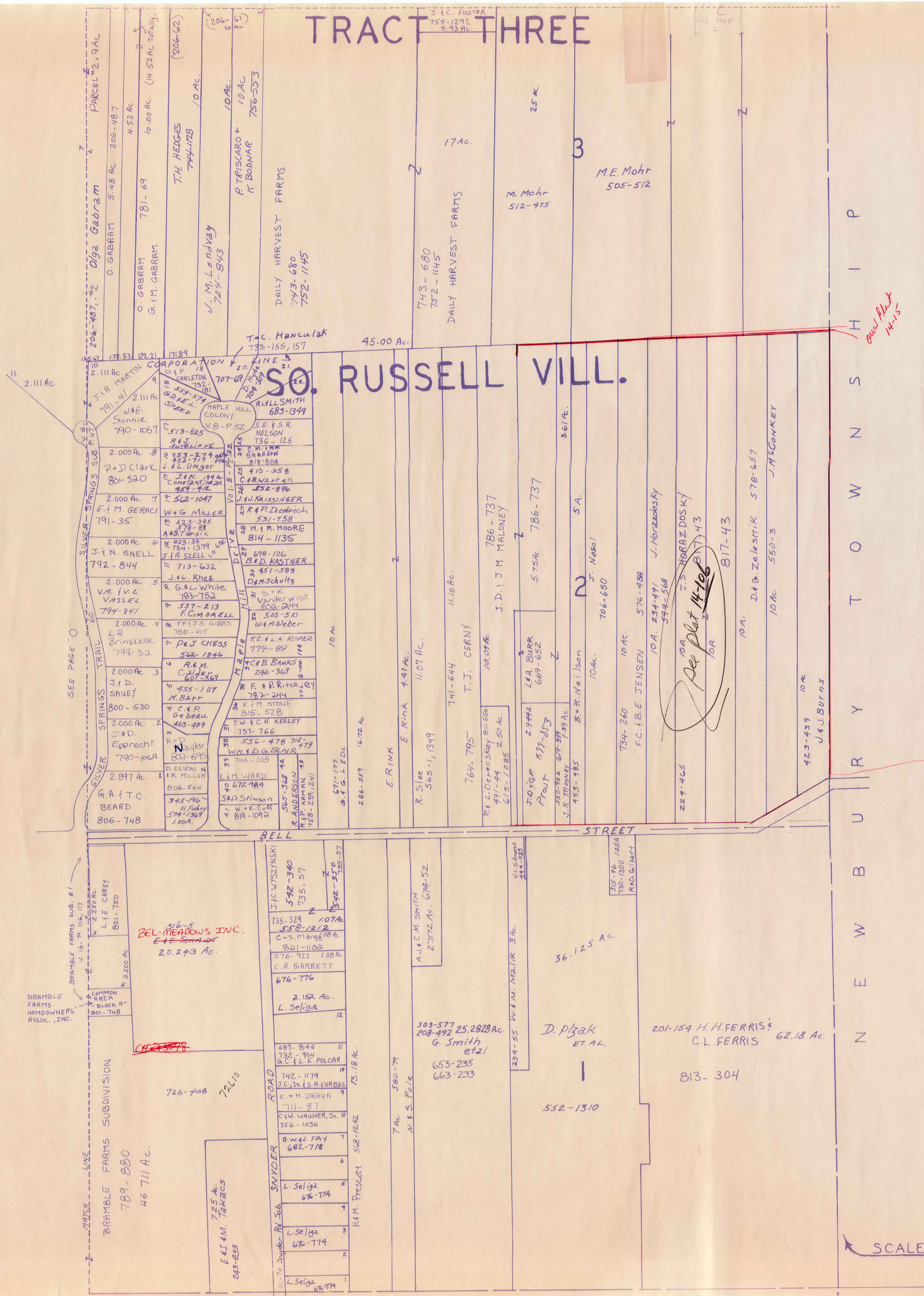
* inadequate description

A	B	C	D
E	F	G	H
I	J	K	L
M	N	O	P

RUSSELL-0

RELATIVE REPRESENTATION

TRACT THREE



SCALE: 1" = 300'

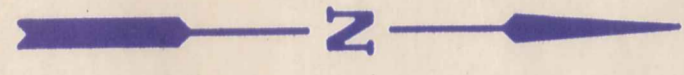
* Inadequate description

A	B	C	D
E	F	G	H
I	J	K	L
M	N	O	P

RUSSELL-P
JANUARY 1, 1989
RELATIVE REPRESENTATION

VILLAGE OF SOUTH RUSSELL
WASTE WATER TREATMENT
PLANT SITE
5.440 Ac.
(0.29 A BAINBRIDGE TWP.)

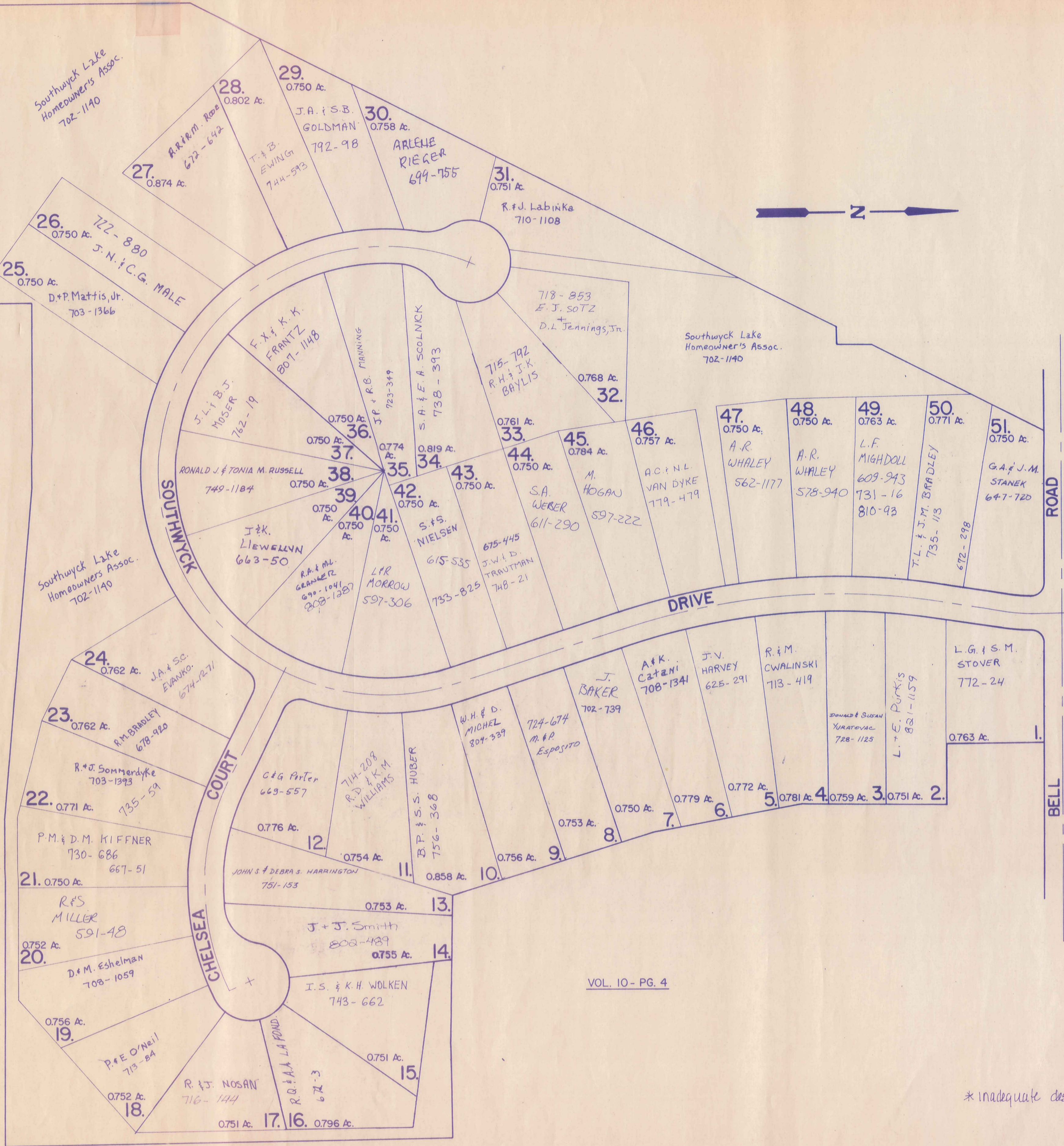
Southwyck Lake
Homeowners Assoc.
702-1140



BAINBRIDGE TOWNSHIP
RUSSELL TOWNSHIP

VOL. 9 - PG. 101

SHEERBROOK ACRES



VOL. 10 - PG. 4

* inadequate description

SHEERBROOK ACRES NUMBER 2

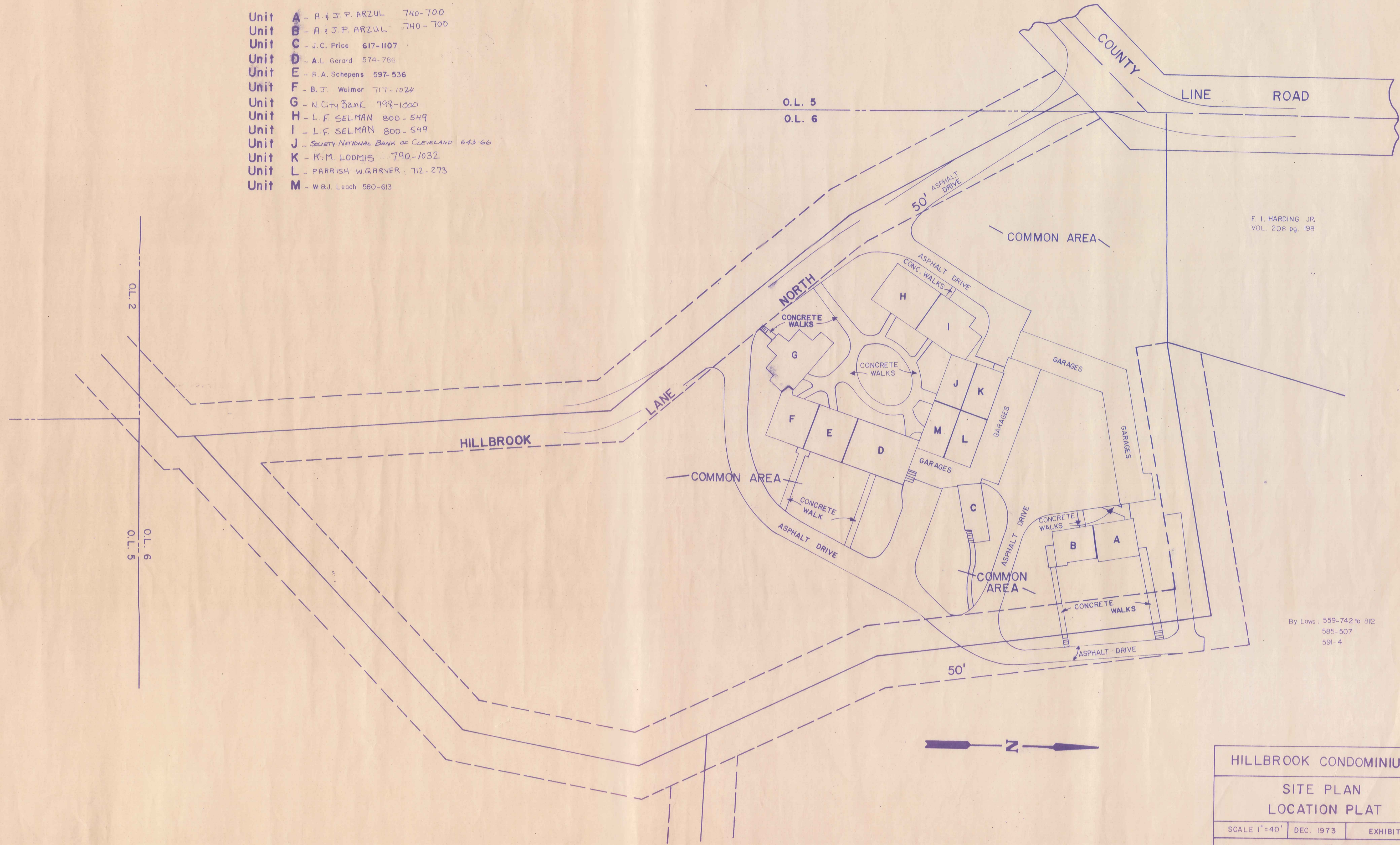
JAN. 1, 1989

RELATIVE REPRESENTATION

14-Q

HILLBROOK CONDOMINIUM

- Unit A - A. J. P. ARZUL 740-700
- Unit B - A. J. P. ARZUL 740-700
- Unit C - J. C. Price 617-1107
- Unit D - A. L. Gerard 574-786
- Unit E - R. A. Schepens 597-536
- Unit F - B. J. Weimer 717-1024
- Unit G - N. City Bank 798-1000
- Unit H - L. F. SELMAN 800-549
- Unit I - L. F. SELMAN 800-549
- Unit J - SOCIETY NATIONAL BANK OF CLEVELAND 643-66
- Unit K - K. M. LOOMIS 790-1032
- Unit L - PARRISH W. GARNER 712-273
- Unit M - W. B. J. Leach 580-613



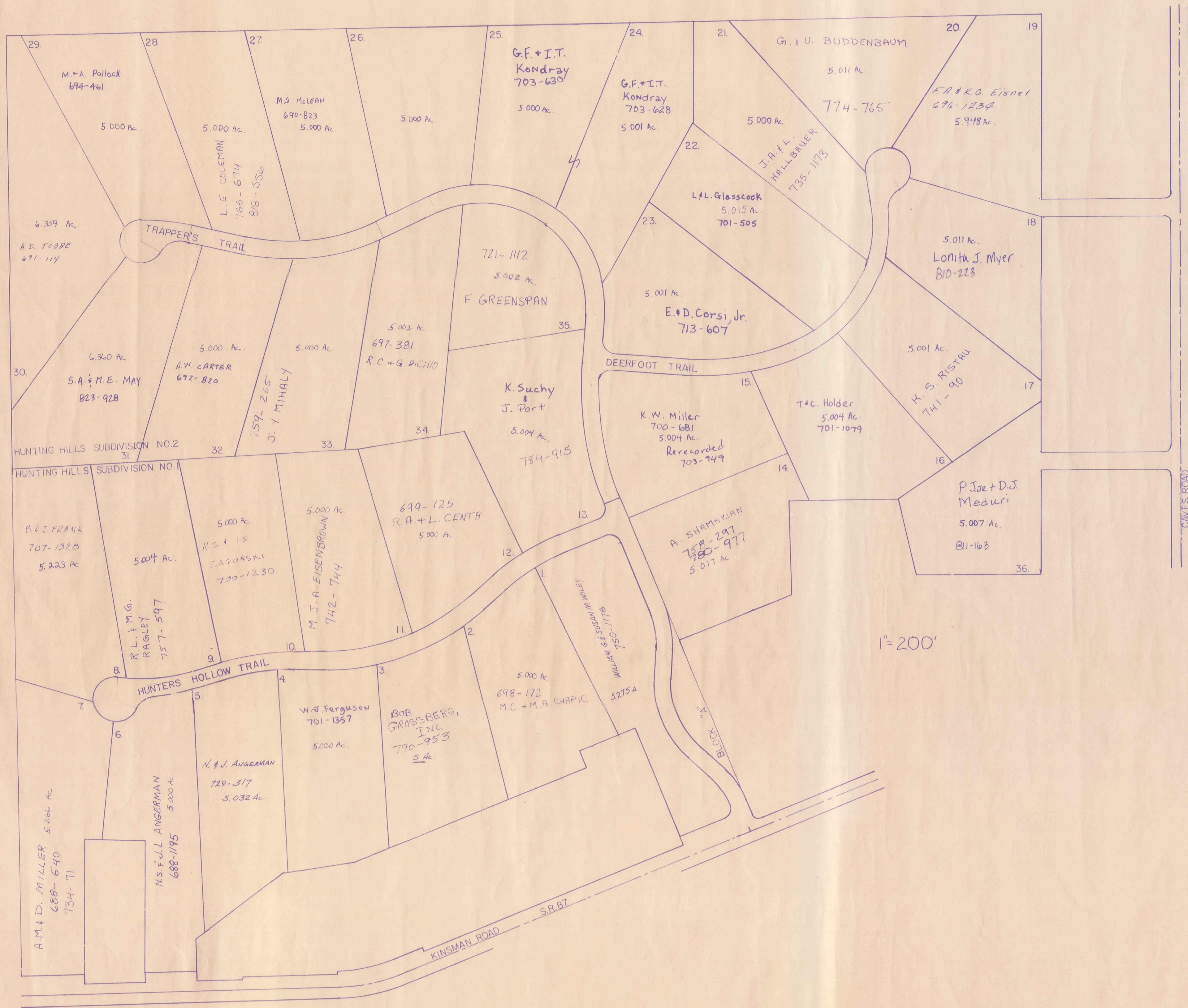
F. I. HARDING JR.
VOL. 208 pg. 198

By Laws: 559-742 to 812
585-507
591-4

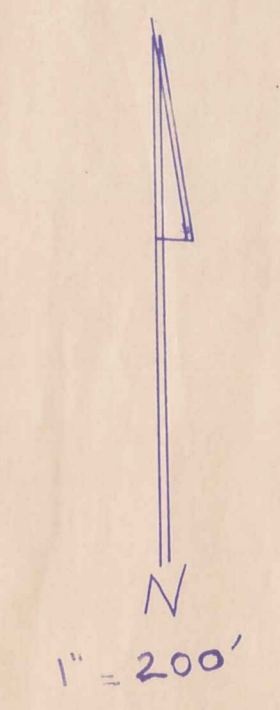
HILLBROOK CONDOMINIUM		
SITE PLAN LOCATION PLAT		
SCALE 1"=40'	DEC. 1973	EXHIBIT B
14 - R RUSSELL		
Recorded Vol. 10 pg. 39		

JAN. 1, 1989

RELATIVE REPRESENTATION
* Inadequate description

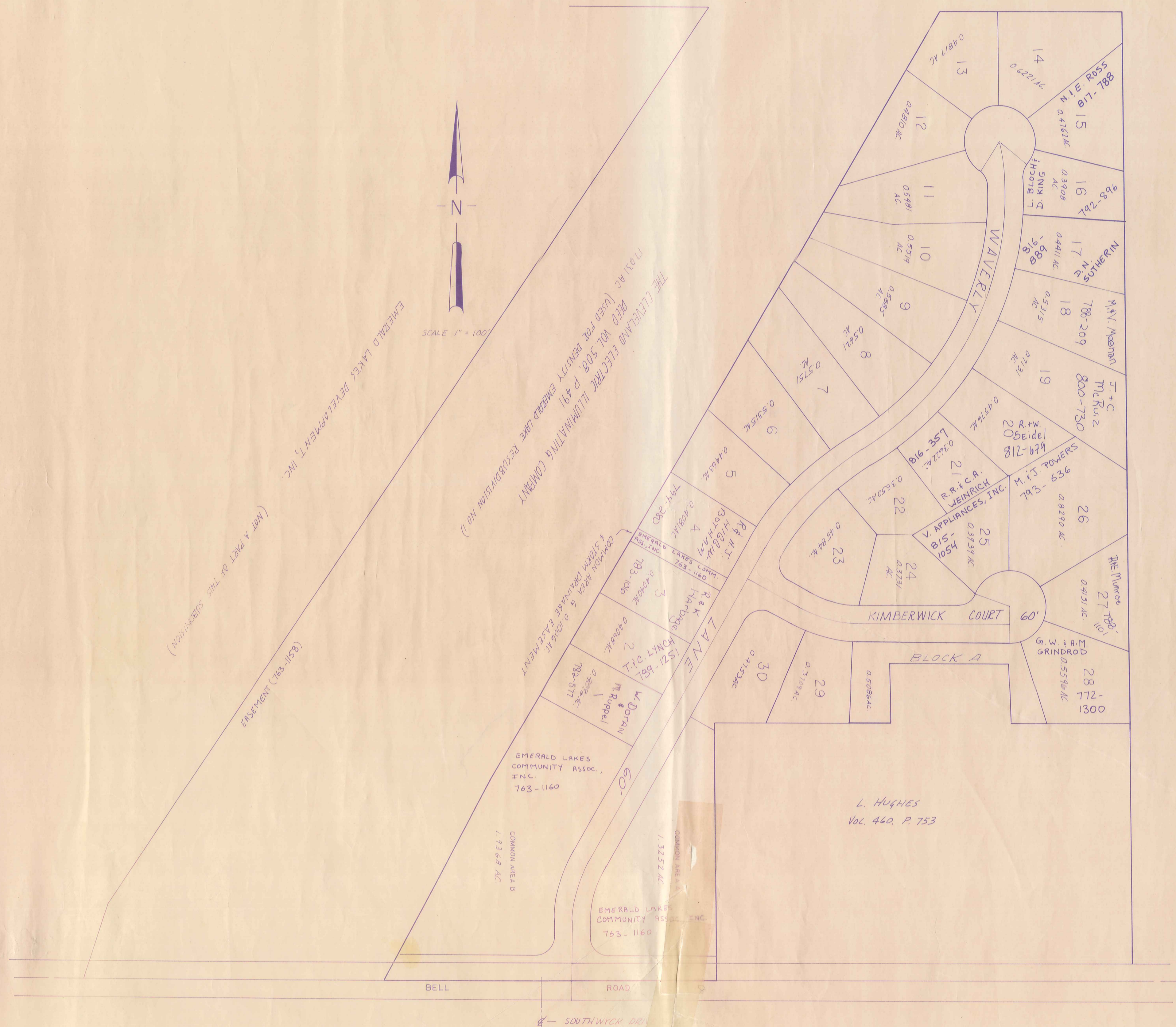


HUNTING HILLS SUBDIVISIONS. 1&2.
 no.1. vol. 14 pg. 1-2.
 no.2. vol. 14 pg. 17-19.
 JAN 1,
 HUNTING HILLS PROPERTIES, INC.



* Inadequate description

JANUARY 4, 1989
 RELATIVE REPRESENTATION



EMERALD LAKE
SUBDIVISION NO. 1
VOL. 15 - PG. 107, 108 &
RESUBDIVISION NO. 1
VOL. 15 - PG. 134, 135

JANUARY 1, 1989

* Inadequate description